



### Main features

- Automatic scan Com Port/Network
- Support firmware upgrade
- Support ExportConfig/ImportConfig
- Multiple country languages
- Global frequency(860~960MHz)
- Password mode
- Read specify tag
- Relay
- Data cache
- Multiple customizable communication protocols
- Remote listening
- RSSI

### Product technical parameter

<b>Frequency</b>	865~868MHz (EU standard),902~928MHz (US standard)
<b>Protocol</b>	ISO18000-6B/6C(EPC GEN2)
<b>Built-in antenna</b>	Sdbi circular antenna
<b>Work mode</b>	Active / trigger / answer / password mode(optional)
<b>RF power</b>	26 dbm (adjustable)
<b>Read distance</b>	8~10 m (depends on tag)
<b>Interface</b>	RS232/USB/WG26/RELAY/TCP/IP/PD/E/WIFI(optional)
<b>Power supply</b>	9~36V
<b>Reader Size</b>	260*260*60mm
<b>Net weight</b>	1.2kg
<b>Package size</b>	400*300*100mm
<b>Package gross weight</b>	2.3kg
<b>Operating Temp</b>	-10~+55 °C
<b>Storage Temp</b>	-20~+75 °C

### Detailed image

01 Spare parts:1pc reader,1pc power adapter,1pc plug,1pc installation bracket



Install bracket

Power adapter

US plug

EU plug

CHN plug

02 Reader dimension:



Front side



Back side

260mm



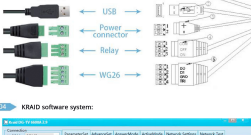
60mm

260mm

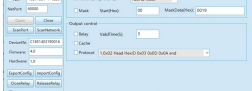
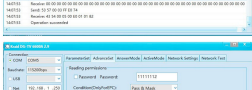
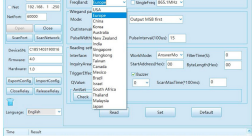
Reader Size: 260\*260\*60mm

03 Interface:

- Standard interface have RS232/USB/WG26/RELAY/TCP/IP/PD/E/WIFI



04 KRAID software system:



05 Package:

- Package size:400\*300\*100mm
- Package weight: 2.3kg

